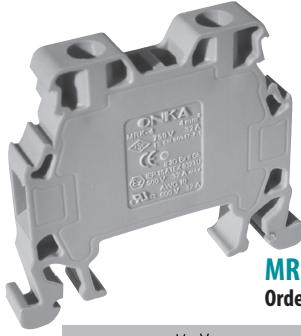
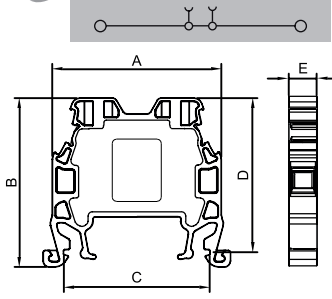


MRK SERIES SCREWED TYPE RAIL TERMINAL BLOCKS MRK SERİSİ VIDALI TİP RAY KLEMENSLER



MRK 4

Order No: 1022



Dimensions Ölçüler (mm)	A	B	C	D	E
	40,0	40,0	34,5	36,5	6,7

MATERIAL / MATERYAL

Body / Gövde	PA6.6 V2
Bridge / Köprü	Copper / Bakır
Contact / Kontak	CK45 Steel / Çelik
Screw/ Vida	Steel / Çelik
Temp./ Sıcaklık	-40 °C, +140 °C
Cable Strip L. / Soyma Boyu	10 mm
Torque / Tork	0,5 Nm

DATA / VERİ	TSE / CE	UL
Voltage / Gerilim	750 V	300 V
Current / Akım	32 A	32 A
Section / Kesit	4,0 mm ²	10 AWG
Norm	EN-60947-7-1	UL 1059

RENKLER / COLOURS

RENK/COLOUR	Order No. / Sip.No.	Pcs. / Ad.
GREY / GRİ	1022	100
CREAM / KREM	1023	100
BLACK / SİYAH	1024	100
BLUE / MAVİ	1025	100
BROWN/K.RENGİ	1026	100
RED / KIRMIZI	1027	100
YELLOW / SARI	1028	100
GREEN / YEŞİL	1029	100

ACCESSORIES / AKSESUARLAR

Cross Connection / Köprü	Order No./ Sip. No.	Section/ Kesit	Pcs./ Ad.
	1930	4 / 2	100
	1931	4 / 3	100
	1932	4 / 4	50
	1933	4 / 10	30
	1934	4 / 20	20
Stopper / Durdurucu	1202,1222,1212		
Group Sticker/Grup Etiketi	1232		
Marking / Markalama	9770 / 4440 / 4442 / 9540 / 7301		